



BD **II** XD  
WIDE-ANGLE XD LENS SERIES







## Optical excellence since 1954.

From the invention of the original spotting scope in the 1950s, every decade has seen Japanese optics manufacturer, Kowa continue to innovate in the world of optical design & technology.

This legacy continues today with the reinvention of the popular Kowa BD Binocular series. Introducing the BDII-XD. A range of enhanced optics at the forefront of imaging excellence utilising Kowa's premium XD lenses.

Binoculars that benefit from decades of Kowa optical advancements and the philosophy behind the BDII-XD is simple:

### *Affordable without compromise.*

A binocular that can be enjoyed by the many, whilst still delivering exceptional image resolution, rugged build quality, superior engineering and comfortable operation.



BD **II** XD  
WIDE-ANGLE XD LENS SERIES



WATERPROOF  
KOWA JAPAN  
BDI42-8XD  
8x42 Field 8.2°  
Kowa Opt. Co. Ltd.

# KOWA XD

FLUORITE RICH LENSES

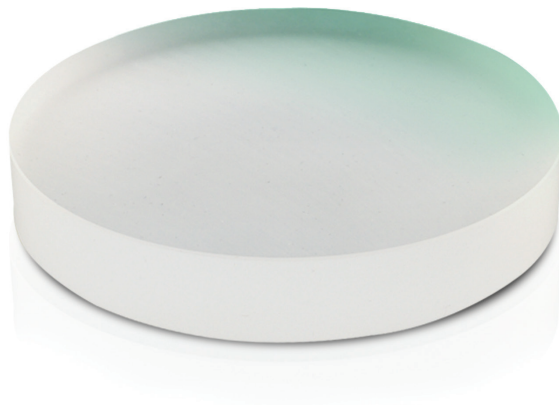


**Standard optics**

Example of chromatic aberration (colour blur).

**Kowa XD lenses**

Fluorite rich lenses producing high contrast and resolution.



## No ordinary ED lens.

As with many binocular brands, the BDII-XD series feature ED (Extra low dispersion) glass to improve optical performance, but the story does not end there. ED glass is manufactured in a variety of quality grades.

Every BDII-XD model features Kowa's environmentally friendly, legendary XD objective lenses. This high resolution ED glass contains large amounts of the mineral fluorite crystal - the best material available today for light transmission ensuring an image with edge to edge sharpness and virtually zero chromatic aberration (colour blur).

***The result: a simply stunning view of the natural world.***

Kowa lens coating technology developed over decades, further enhance the light transmission properties of all lenses and Kowa's unique KR coating repels dirt and fluid.

Enjoy sharp images with natural colour, high contrast and incredible detail, from dawn through to dusk.







## Rugged reliability ensured.

Every model in the BDII-XD range benefits from a magnesium alloy chassis, a sophisticated moulding process produces the feel and strength of metal with the added benefit of decreased weight.

The lightweight, rugged structure can tolerate the severest conditions and provides a sense of security and longevity.

*The BDII-XD are built to last.  
Use them with confidence.*

Surrounding the tough magnesium alloy body is a protective layer of rubber armour, not only providing a sure, comfortable grip but also increasing the level of durability.

Each BDII-XD is fully waterproof and dry nitrogen filled to prevent the lenses from fogging and Kowa's KR coating protects from dirt and other foreign residue build-up that may affix to the lenses during use.



SEE MORE



## Take a wider point of view.

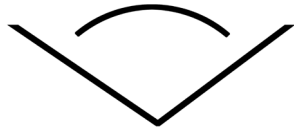
One of the stand-out optical features of the BDII-XD series is their enviable large field of view, boasting class leading wide angle performance.

*Viewing is super comfortable on the eye, making long periods of use out in the field a pleasure.*

The field of view is the area in which you can see through your binoculars and is usually measured in m/1000m or in degrees.

**For example: at 1000m distance the BDII32-6.5XD model can see an incredible image width of 175m.**

Find a subject quicker with a wider view of your surroundings with sharpness right into the corners of the image, whilst still enjoying crystal clear clarity.



W I D E   A N G L E

ISO 14132-2  
International Standard  
Optics and Optical Instruments

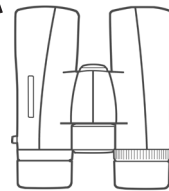
**BDII32-6.5XD** 10° 175m

**BDII32-8XD** 8.8° 154m

**BDII42-8XD** 8.2° 143m

**BDII42-10XD** 7.2° 126m

**BDII32-10XD** 6.7° 117m



Field of view  
at 1000m  
distance

## Locate your subject more rapidly.



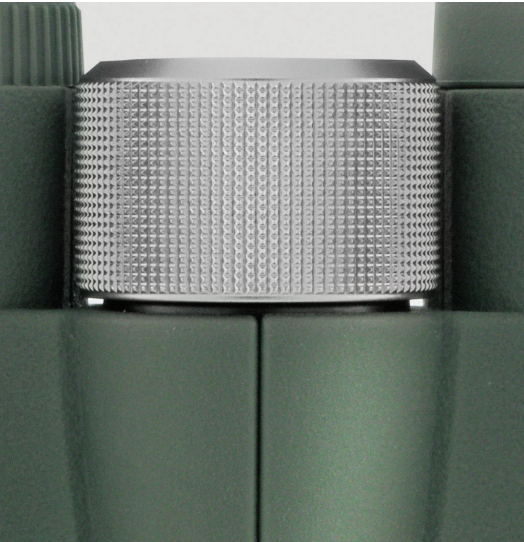
Example of narrow field of view.



Example of wide field of view.

A wider field of view makes locating a subject quicker and easier, particularly when panning a wide area or tracking a moving subject. **In simple terms it can mean the difference between spotting your subject or not.**





## Engineered for your comfort.

The BDII-XD series are engineered to enhance your viewing experience.

A sleek, ergonomic design with a specially selected tactile rubber armour layer ensures easy and comfortable operation - elevating every moment of use.

### *Operation is flawless.*

A fluid, responsive focus wheel delivers pin point accuracy and smooth twist eye-cups ensure optimum viewing for both spectacle and non spectacle wearers.

Tailor the BDII-XD specific to your own viewing requirements with an easy to use dioptre adjustment system.

The ergonomic body of the BDII-XD series is as impressive as the optics it protects, with every curve considered to make observation both relaxing and free from fatigue.



BD **II** XD  
WIDE-ANGLE XD LENS SERIES









## Night Sky.

As an official wide angle binocular, all models in the BDII-XD range are perfect for serious astronomy users and those who simply want to enjoy expansive views of the night sky.

*The BDII-XD's wide field of view and clarity will take you on an immersive journey across the stars.*

These lightweight, ergonomic binoculars are the ideal choice to enjoy comfortable extended observations of meteor showers, the lunar surface, constellations, planets and more.





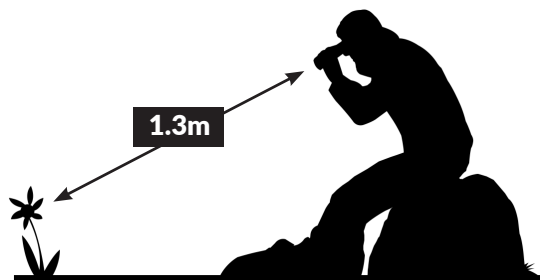


## Close Focus.

All models in the BDII-XD range benefit from excellent close focus performance. The 42mm series can focus down to 1.8m whilst the 32mm models can achieve an incredible 1.3m close focussing distance.

*Enjoy a secret, invisible world in breathtaking detail.*

Observe insects, flowers and other micro objects under magnification in great detail from a comfortable position without having to disturb the subject.



Close Focus:  
1.3m (32mm)  
1.8m (42mm)



XD  
Lenses



Wide  
Angle



Waterproof  
& Nitrogen  
Filled



Fully Multi  
Coated &  
KR Coating



Magnesium  
Alloy  
Body



Close  
Focus  
1.3m (32)  
1.8m (42)



# BD II XD

WIDE-ANGLE XD LENS SERIES



## BD II 42 XD

42mm XD objective lens series.  
Available in 8 and 10x magnification.

8x42 | 10x42

## BD II 32 XD

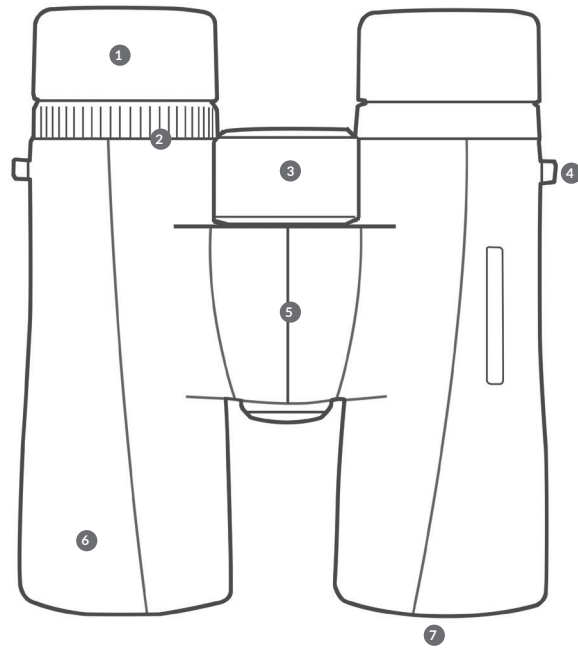
32mm XD objective lens series.  
Available in 6.5, 8 and 10x magnification.

6.5x32 | 8x32 | 10x32



# BD II XD

WIDE-ANGLE XD LENS SERIES



1. Twist eye-cups
2. Dioptre adjustment
3. Focus wheel
4. Strap holder
5. Hinge
6. Magnesium alloy body with rubber armour
7. XD objective lens

	<b>BDII32-6.5XD</b>	<b>BDII32-8XD</b>	<b>BDII32-10XD</b>	<b>BDII42-8XD</b>	<b>BDII42-10XD</b>
Diameter	32mm	32mm	32mm	42mm	42mm
Magnification	6.5x	8x	10x	8x	10x
Field of view	10°	8.8°	6.7°	8.2°	7.2°
Field of View at 1000m	175m	154m	117m	143m	126m
Field of View at 1000yds	525ft	462ft	351ft	429ft	378ft
Twilight Factor	14.4	16.0	17.9	18.3	20.5
Relative Brightness	11.4	12.0	13.2	13.3	14.2
Pupil Distance	57-76	57-76	57-76	57-76	57-76
Diopter Compensation (diopters)	±4	±4	±4	±4	±4
Eye Relief	17mm	16.5mm	15mm	17mm	16.5mm
Close focus	1.3m	1.3m	1.3m	1.8m	1.8m
Size (LxWxH)	116x124x51mm	116x124x51mm	116x124x51mm	139x128x52.5mm	139x128x52.5mm
Weight	535g	540g	525g	640g	645g
Body Material	Magnesium Alloy				
Lens Type	2x KOWA XD (ED) Lenses				
Coating	Phase Coated Prism   Fully Multi Coated   C3 Coated Prism   KR Coated Lens				

Headquarters

**Kowa Optical Products Co., Ltd.**  
4th Fl., Toko Bldg, 4-11-1, Nihonbashi-Honcho  
Chuo-Ku, Tokyo 103-0023 | Japan

T: +81-3-5651-7061  
E-mail: [info@kowa-prominar.com](mailto:info@kowa-prominar.com)  
[www.kowa-prominar.com](http://www.kowa-prominar.com)

.....  
Europe

**Kowa Optimed Deutschland GmbH**  
Fichtenstrasse 123, 40233, Düsseldorf  
Germany

T: +49 (0) 211-542184-00  
E-mail: [scope@kowaoptimed.com](mailto:scope@kowaoptimed.com)  
[www.kowaoptic.com](http://www.kowaoptic.com)

.....  
USA

**Kowa American Corporation**  
20001 South Vermont Avenue  
Torrance, CA 90502 | U.S.A.

T: +1 (800) 966-5692  
E-mail: [customerservice@kowa.com](mailto:customerservice@kowa.com)  
[www.kowa-usa.com](http://www.kowa-usa.com)



Your Local Kowa Dealer

All equipment and specifications listed are subject to change without prior notice. Before using these products, be certain to carefully read the instruction manual. Do not under any circumstances use these products to look at the sun, this may result in loss of eyesight. Names of companies and products described in this pamphlet are the trademarks or registered trademarks of each company.